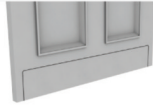


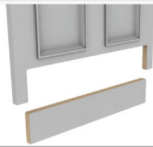
Tamarack Technologies

Perfect Balance

In-Door Return Air Pathway (R.A.P.)



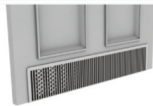
STEP 1
LAYOUT
TEMPLATE



STEP 2
CUT DOOR



STEP 3
ATTACH
PERFECT
BALANCE



**PRESSURE
BALANCED!**

OUTSIDE DIMENSIONS SPECIFICATIONS

Product Length:	27 1/4"
Grille Length:	25"
Height:	4 3/4"
Depth:	1 5/8"
Color:	White (Paintable)

Fits doors 1 3/8" thick only.
Rough Opening 24" x 4"

Tamarack Technologies will honor all new door manufacturers limited warranties when installing the Perfect Balance® Door R.A.P.. In Fact, we will DOUBLE the warranty period from 1 year to 2 years. (Please visit the appropriate door manufacturer's website for their specific warranty details).



MASONITE INTERNATIONAL, TESTED AND APPROVED THE PERFECT BALANCE® FOR USE IN THEIR "SAFE N' SOUND™ INTERIOR DOOR

PATENTED



AS SEEN IN "FINE HOMEBUILDING" MAGAZINE

In-Door Return Air Pathway (R.A.P.)

The R.A.P. is the inexpensive alternative to costly jump ducts or dedicated room fresh air returns.

- Eliminates pressure imbalances
- Meets Energy Star and R2000 standards
- Allows HVAC systems to run more efficiently and reduce energy consumption
- Inexpensive, easy to install, no moving parts
- Internal noise and light diminishing baffle
- Durable, high impact ABS plastic
- Made in the USA
- Improved bathroom fan performance
- Lifetime guarantee



Tamarack
Technologies, Inc.

Ventilation Solutions

www.tamtech.com

800-222-5932

LIKE US ON
FACEBOOK



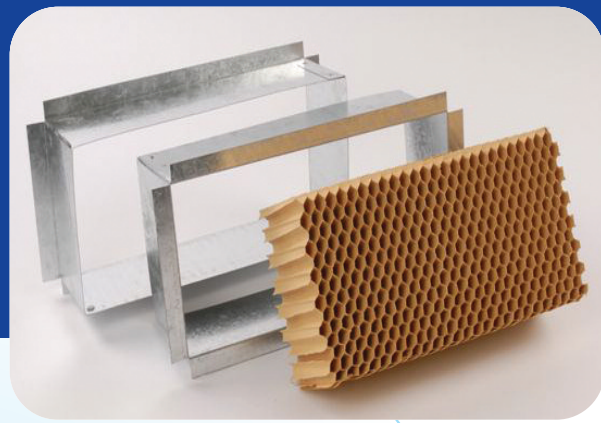
FOLLOW US
ON TWITTER



RAP for Healthy Air Pressure Balance!



One Piece Frame for New 2x4 Construction.



2 Piece Frame for Existing Construction.

RAP Specifications

R.A.P. Sizes	Rough Opening	Grille Dimensions	Flange Dimensions	Air Flow @ 2.5 Pascals
R.A.P.12.4	12"x4"	14"x6"	13 3/4"x5 1/4"	48 CFM
R.A.P. 12.6	12"x6"	14"x8"	13 3/4"x7 1/4"	72 CFM
R.A.P. 14.8	14"x8"	16"x10"	15 3/4"x9 1/4"	112 CFM
R.A.P. 14.6	14"x6"	16"x8"	15 3/4"x7 1/4"	84 CFM
R.A.P. 12.12	12"x12"	14"x14"	13 3/4"x13 3/4"	144 CFM

- ✓ All new construction models include a sheetrock flange.
- ✓ The depth between the flanges is 3 1/2" on new construction model.
- ✓ The overall depth is 4 5/8".
- ✓ Each unit comes with a pair of white grilles.

Retrofit models are available in the same sizes as the new construction models. The retrofit models have two telescoping pieces that install from each side of a wall and do not include the sheetrock flange which can fit up to 2x6 construction.



Get the RAP

- Economical
- Easy Installation
- Innovative Design
- No Mechanical Parts
- Made in the USA
- Dampens Light and Sound
- Compliant with National and State Building Codes

Tamarack
Technologies, Inc.
Ventilation Solutions
www.tamtech.com
800-222-5932